



TITRATION DE LA PEP

Au bloc opératoire



Dr F.OSWALD

BJA

British Journal of Anaesthesia, 120 (5): 1066–1079 (2018)

doi: 10.1016/j.bja.2019.08.017

Advance Access Publication Date: xxx

Special Article

SPECIAL ARTICLE

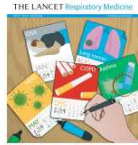
Lung-protective ventilation for the surgical patient: international expert panel-based consensus recommendations

Christopher C. Young^{1,2,*}, Erica M. Harris², Charles Vacchiano^{1,3}, Stephan Bodnar³, Brooks Bukowy³, R. Ryland D. Elliott², Jaclyn Migliarese³, Chad Ragains², Brittany Trethewey³, Amanda Woodward⁴, Marcelo Gama de Abreu⁵, Martin Girard⁶, Emmanuel Futier⁷, Jan P. Mulier⁸, Paolo Pelosi^{9,10} and Juraj Sprung¹¹

REVUE

Incidence of mortality and morbidity related to postoperative lung injury in patients who have undergone abdominal or thoracic surgery: a systematic review and meta-analysis

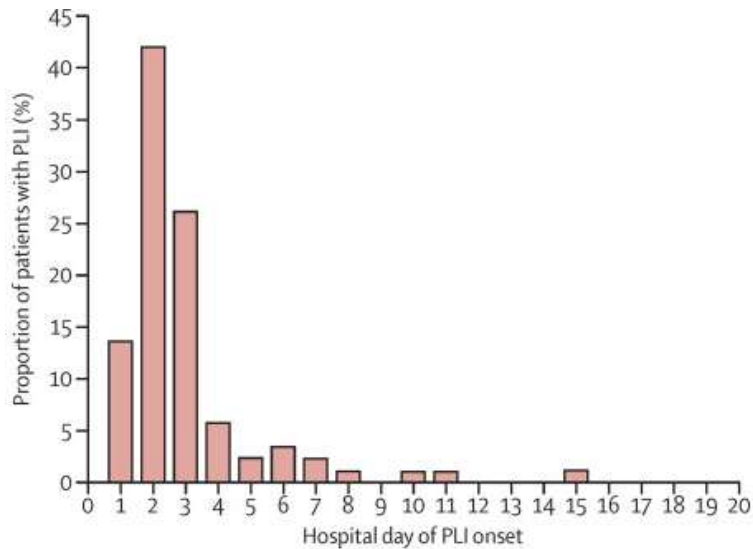
Ary Serpa Neto Dr, Sabrine NT Hemmes MD, Carmen SV Barbas MD, Martin Beiderlinden MD, Ana Fernandez-Bustamante MD, Emmanuel Futier MD, Markus W Hollmann MD, Samir Jaber MD, Alf Kozian MD, Marc Licker MD, Wen-Qian Lin MD, Pierre Moine MD, Federica Scavonetto MD, Thomas Schilling MD, Gabriele Selmo MD, Paolo Severgnini MD, Juraj Sprung MD, Tanja Treschan MD, Carmen Unzueta MD, Toby N Weingarten MD, Esther K Wolthuis MD, Hermann Wrigge MD, Marcelo Gama de Abreu MD, Paolo Pelosi MD et Marcus J Schultz MD
Lancet Respiratory Medicine, The, 2014-12-01, Volume 2, Numéro 12, Pages 1007-1015, Copyright © 2014 Elsevier Ltd



Lancet Respiratory Medicine, The

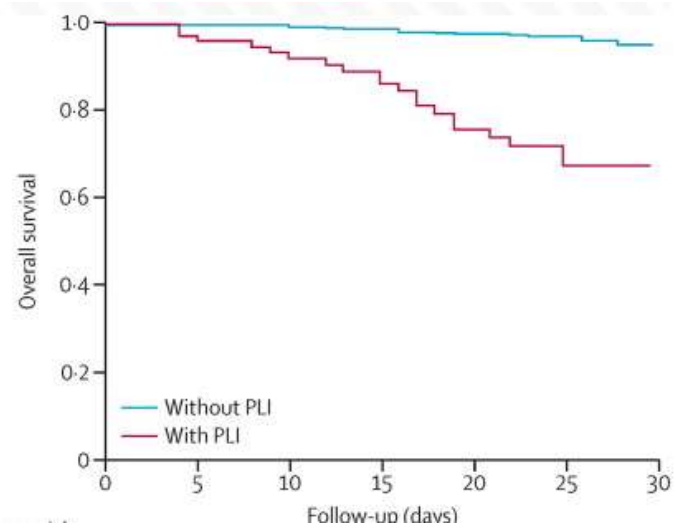
Volume 2, Numéro 12

Copyright © 2014 Elsevier Ltd




Timing of PLI during hospital stay

Day 0 is the day of surgery. PLI=postoperative lung injury.



In-hospital mortality		
No PLI	PLI	p value
45 (1.4%)	25 (20.3%)	<0.0001

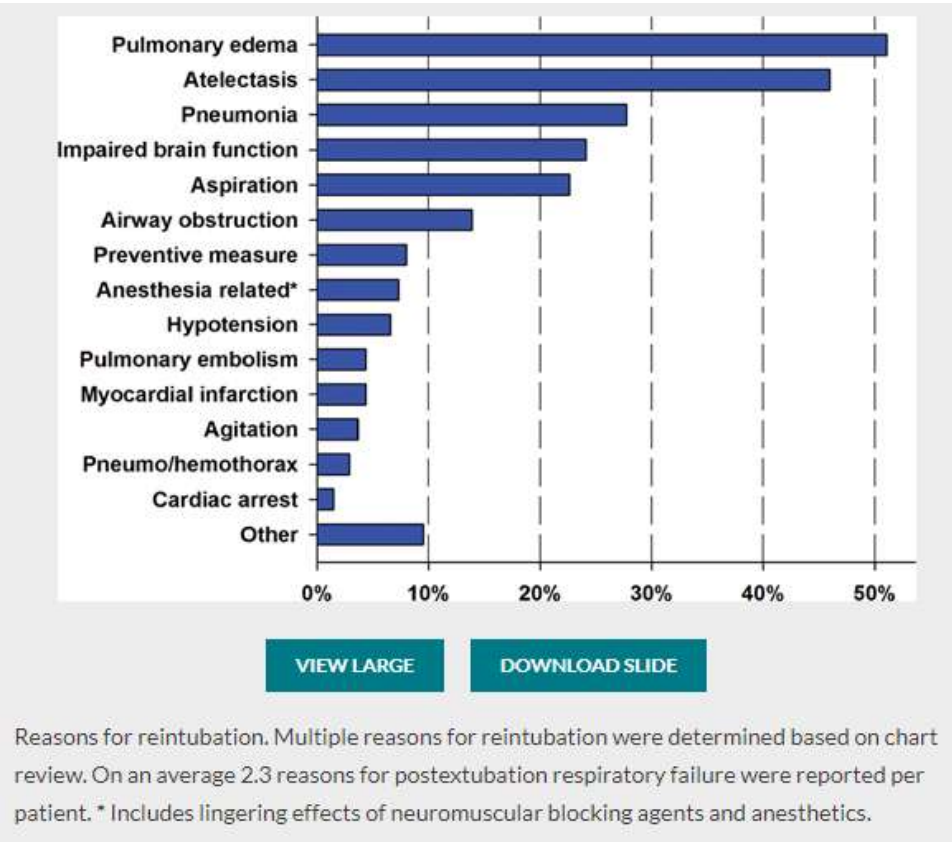
Development and Validation of a Score for Prediction of Postoperative Respiratory Complications FREE

Britta Brueckmann, M.D.; Jose L. Villa-Urbe, B.S.; Brian T. Bateman, M.D.; Martina Grosse-Sundrup, M.D.; Dean R. Hess, Ph.D.; Christopher L. Schlett, M.D., M.P.H.; Matthias Eikermann, M.D., Ph.D. 

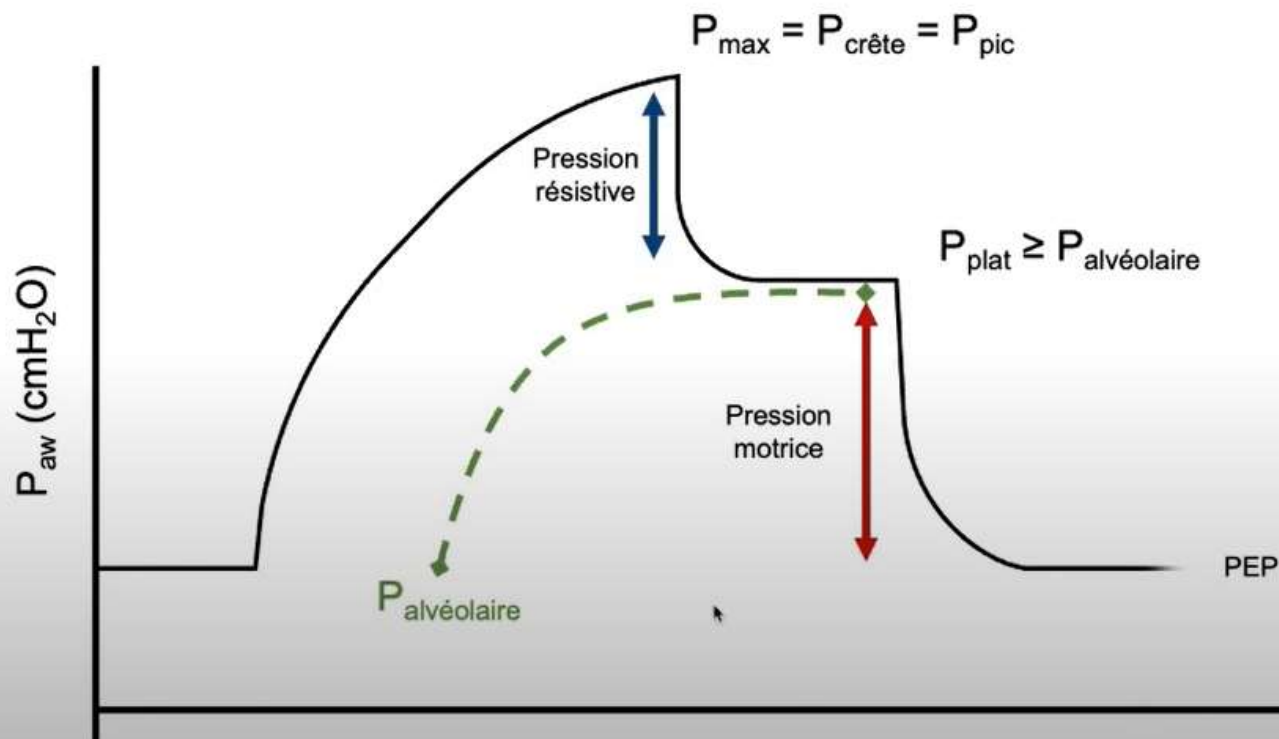
+ Author and Article Information

Anesthesiology June 2013, Vol. 118, 1276-1285.

<https://doi.org/10.1097/ALN.0b013e318293065c>



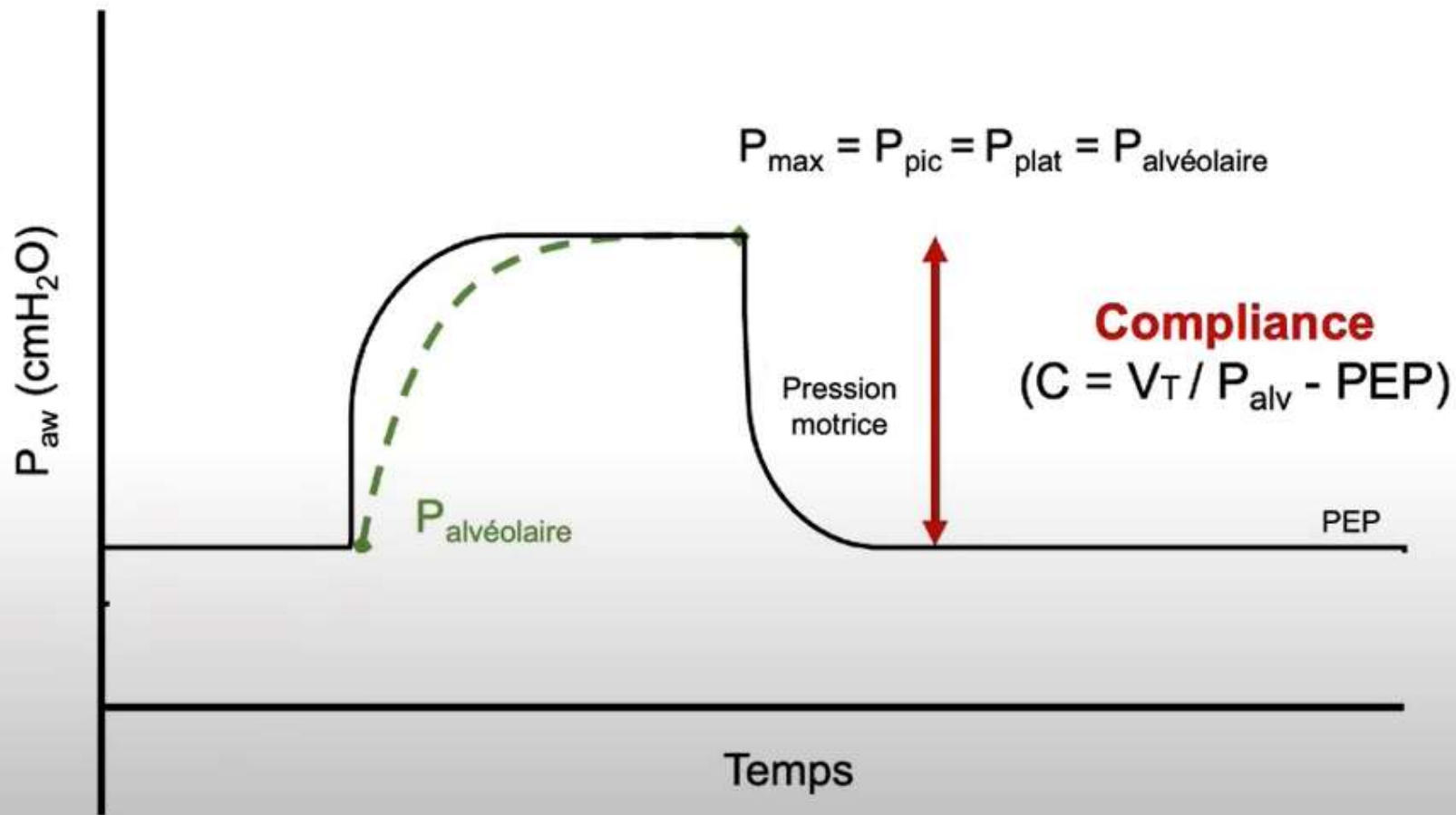
Ré intubation dans les 3 jours
→ Mortalité 0,26% à 16%



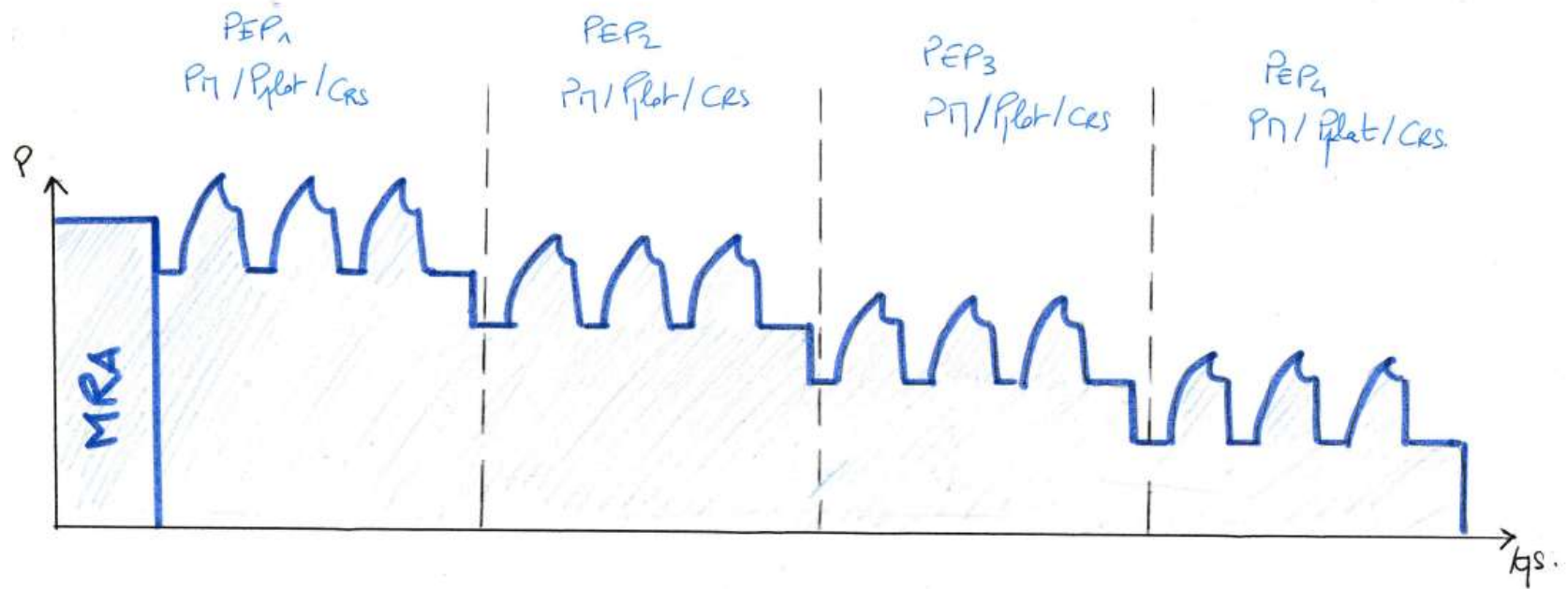
Résistance
 $(R = P_{\text{max}} - P_{\text{plat}} / \text{Débit})$

Compliance
 $(C = V_T / P_{\text{plat}} - \text{PEP})$

Pression Motrice

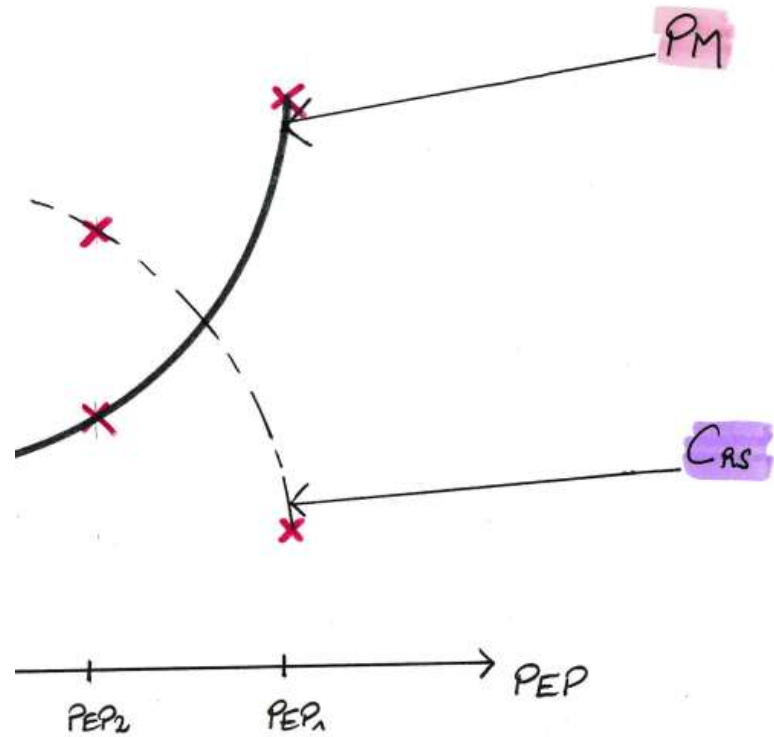


Vt fixe (6-8 ml/kg P_{IT})
Poliers décroissants de PEP (110 cycles par poliers).



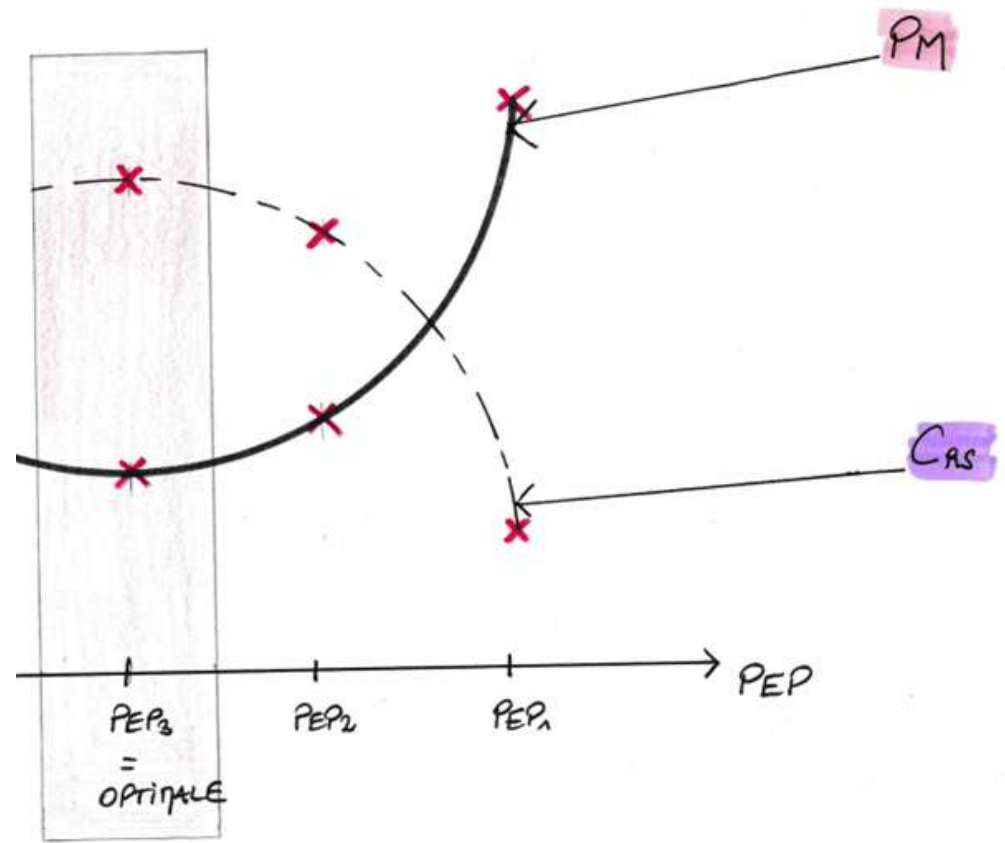
PEP EXCESSIVE

$$C = \frac{V}{P}$$



PEP EXCESSIVE

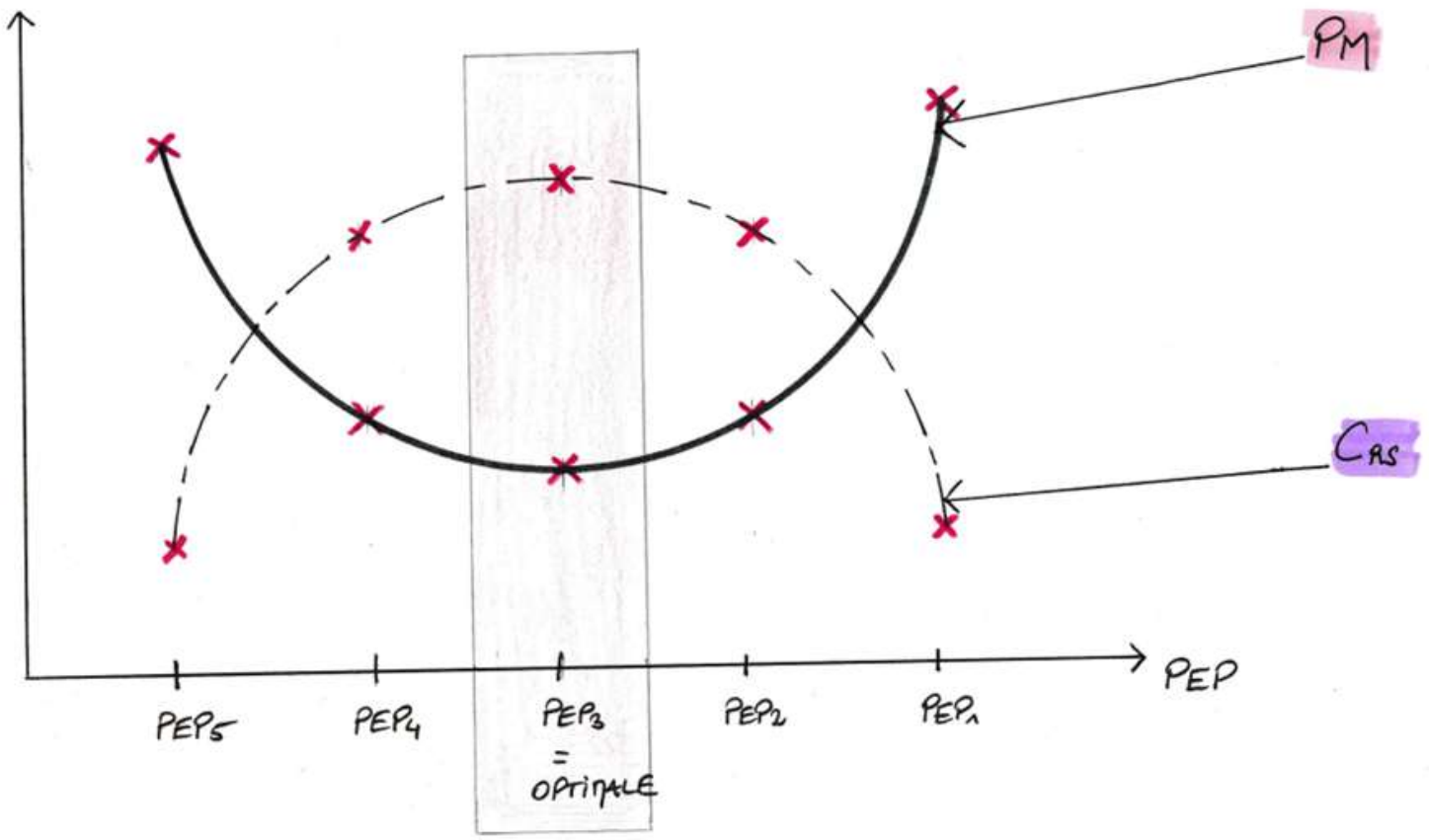
$$C = \frac{V}{P}$$



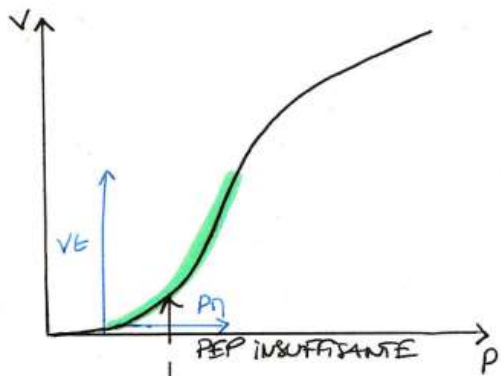
$$C = \frac{V}{P}$$

PEP INSUFFISANTE

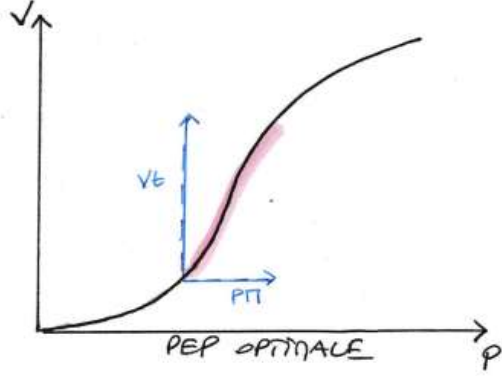
PEP EXCESSIVE



COURBE P/V



ZONE D'INFLEXION INFÉRIEURE
= FERMETURE DES ALVÉOLES



ZONE D'INFLEXION SUPÉRIEURE
= SURDISTENSION

